

HARRIS EXPLORATION

DRILLING & ASSOCIATES INC.

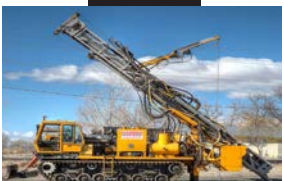
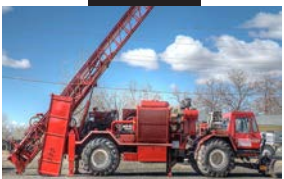
AN INDUSTRY LEADER

61
YEARS



**SETTING THE
STANDARD**

Harris Exploration Drilling and Associates offers a full array of drilling capabilities including dual tube reverse circulation, air/fluid rotary, air rotary casing hammer, down hole casing advance (Symetrix & Holte Systems) on both vertical and angle projects.



EXCELLENCE

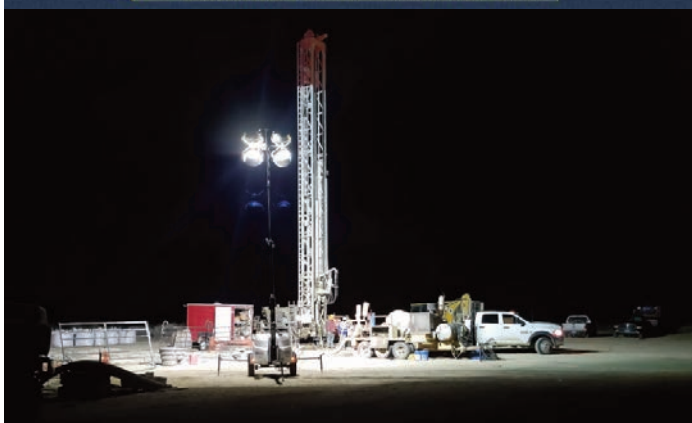
ALL TERRAIN DRILLING WITH WIRE LINE CORE & DUAL TUBE RC METHODS

SPECIALIZING AND EXPERIENCED IN **LITHIUM**
EXPLORATION, TESTING, AND DEVELOPMENT OF BRINE
WELLS UTILIZING RC, MUD ROTARY AND WIRE LINE CORE.

We also offer coring, reclamation/pad construction and heavy haul transportation of equipment between drill sites. Harris operates truck, track and buggy mounted equipment, We have a facilities yard in Fallon Nevada and our administration office is located in San Diego, California. We have equipment in Nevada, California and Arizona.

HARRIS EXPLORATION

DRILLING & ASSOCIATES INC.



HEADQUARTERS:

Mailing Address
P.O. Box 81805
San Diego, CA 92138 USA

Telephone: (619) 226-3350
Fax: (619) 226-3351

EQUIPMENT YARD & SHOP:

19 Scheckler Cutoff
Fallon, NV 89406 USA

Pat Harris, President
Cell: (760) 822-7886

Email: ph1756@gmail.com



<http://harrisexploration.com>