

Volcanic Gold & Silver LLC



We are a privately-held junior exploration company focused on creating a substantial increase in shareholder equity through the discovery of large and high-grade gold and silver deposits in the United States.

Volcanic Gold & Silver LLC

- ✦ **Our focus** is on discovery of volcanic-related, epithermal gold/silver deposits, a class of deposits prospective for high grades and large size.
- ✦ We currently control **three exploration projects in Nevada and Oregon** that exhibit extraordinary discovery potential.
- ✦ **Given the exceptionally favorable geology** of our projects, early success is possible and may quickly create a substantial increase in value.
- ✦ **Shareholder liquidity** will be accomplished by a public listing upon achieving a significant market capitalization (or earlier if desired), selling individual discoveries, or by selling the company entirely.
- ✦ **We have considerable experience** in the types of deposits sought, we will use leading edge technology in our exploration, and we will practice sound risk management with our investor's capital.
- ✦ **Volcanic Gold** is not encumbered by diluted shareholdings, onerous contract obligations, properties unworthy of maintenance costs, or debt.

Volcanic Gold & Silver LLC

We are Exploring For Deposits Analogous to:

- ✦ **Hishikari, Japan:** >11 million ounces gold mined and in reserve (342 t); ore averages >1 oz/ton gold (34.3 g/t); extraordinary grades common.
- ✦ **Round Mountain, Nevada:** >17 million ounces gold mined and in reserve (529 t), >24 million ounces gold total resource (749 t).
- ✦ **Midas, Nevada:** Has produced >2.8 million ounces gold eq. (87 t); was Newmont's highest profit mine for many years.
- ✦ **Sleeper, Nevada:** >6 million oz. gold (187 t), 38 million oz. silver (1182 t) mined and in resource; so rich it paid off CAPEX in less than 9 months.
- ✦ **Fire Creek, Nevada:** latest discovery/development of this type of deposit in Nevada (bonanza-grade ore being mined; open pit resource).
- ✦ **El Peñón, Chile:** >5 million oz. gold mined and in resource (155.5 t).
- ✦ **Kelian, Indonesia:** 5.75 m oz Au, 4.66 m oz Ag produced (179 t Au, 145 t Ag) from maar/diatreme breccia; >7.7 m oz (240 t) Au total endowment.

Buckskin-National Project

The **National District** is one of those special places where extremely rich ore was formed; the famous “Electrum Stope” on the National Vein averaged 17 ounces per ton gold (583 g/t).

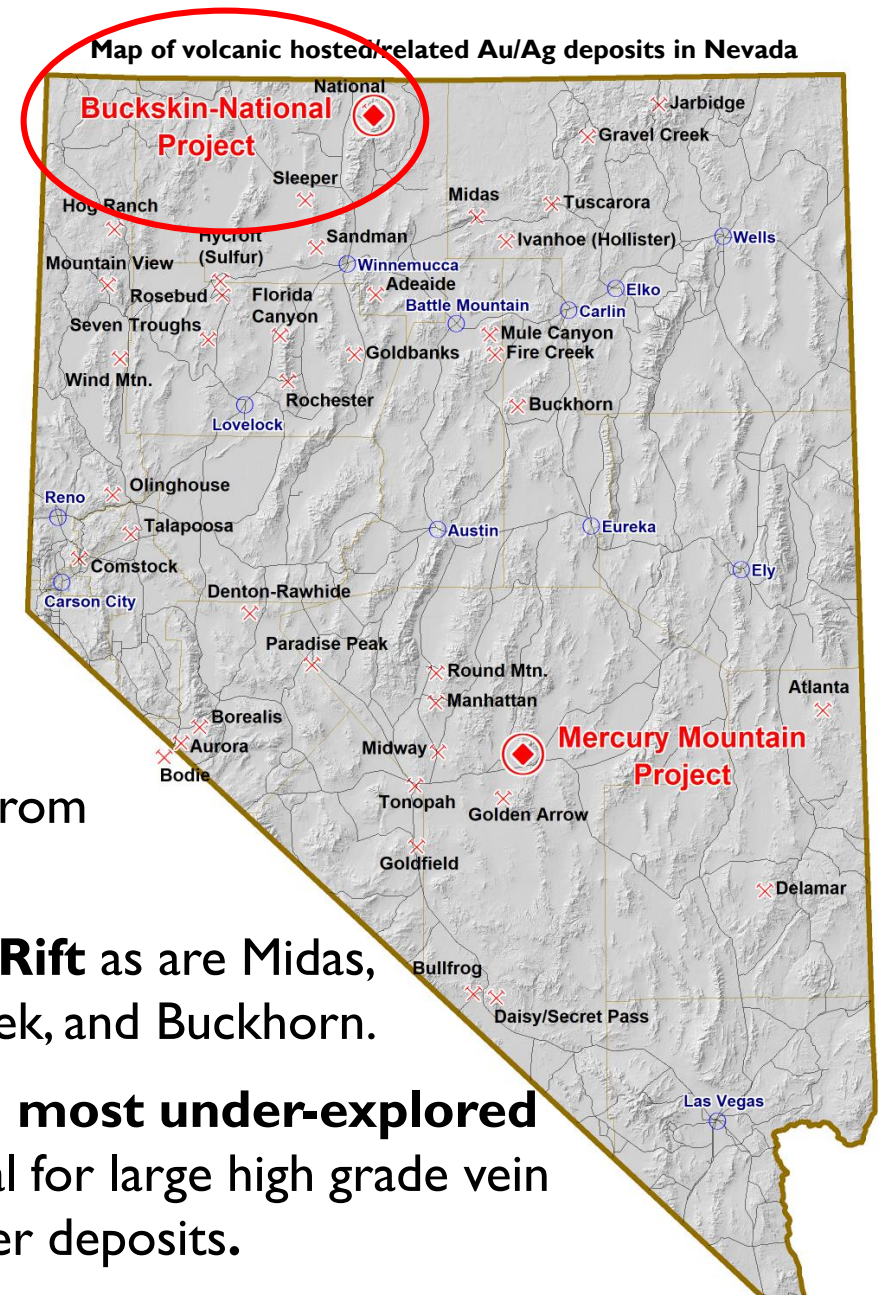
Buckskin-National, located 3 mi (5km) southeast of National, was the center of hydrothermal activity in the National District ~16.5 – 15.5 million years ago.

High grade gold and silver was mined from the Bell Vein within the project area.

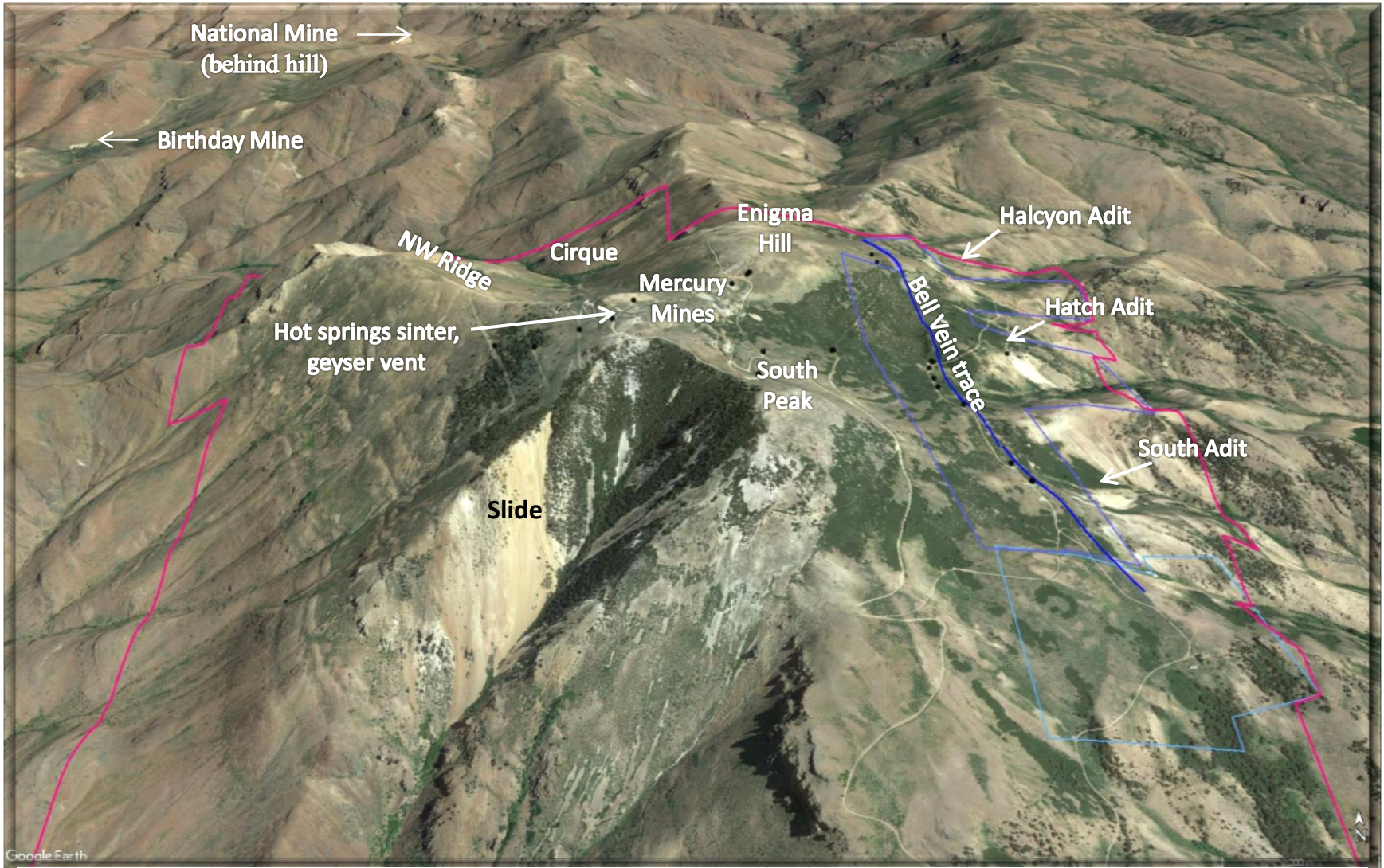
Located along the Northern Nevada Rift as are Midas, Ivanhoe (Hollister), Mule Canyon, Fire Creek, and Buckhorn.

Almost certainly the preeminent and most under-explored property in the USA with obvious potential for large high grade vein (and possibly breccia-hosted) gold and silver deposits.

The project is permitted and drill-ready. 43-101 report by **MDA** available. 4



Google Earth View



**Google Earth view north toward Buckskin-National Project area.
Width of view is approximately 2.3 miles (3.7 km) in center of picture.**

Mercury Mountain Project

Entire historic mercury mining district; same age and setting as Round Mountain; extraordinary low-sulfidation hydrothermal system with widespread gold and silver values up to 13 g/t Au and 396 g/t Ag.

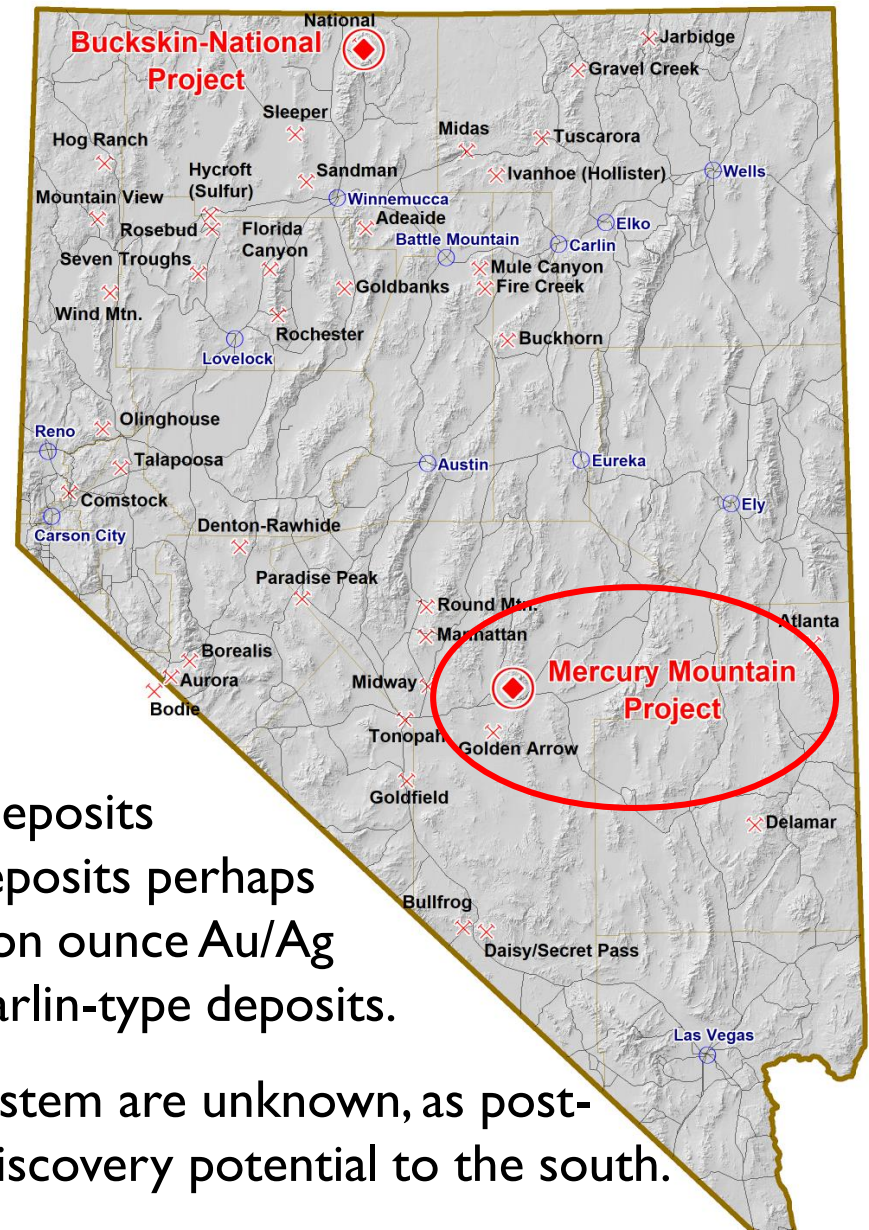
Breccia West Discovery outcrop sampling in 2015 returned 15.2 m (50') averaging 0.971 g/t Au Eq (0.028 oz/ton) adjacent to quartz + adularia altered maar/diatreme breccia deposit at Breccia Knob.

Discovery potential for maar/diatreme deposits like Kelian or Rosia Montana, stockwork deposits perhaps to the scale of Round Mountain, multi-million ounce Au/Ag vein deposits, and large, significant-grade Carlin-type deposits.

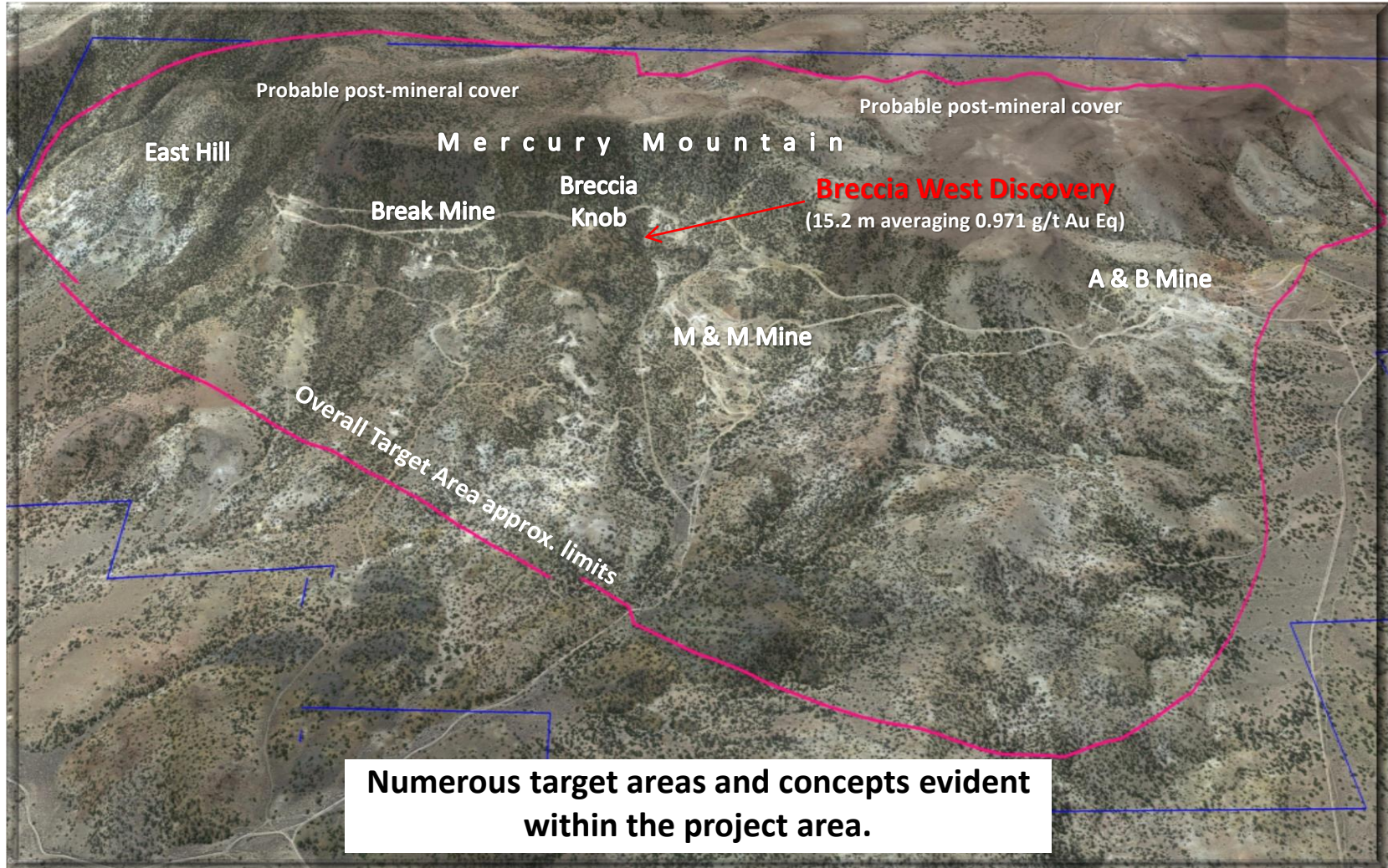
The extents of this large hydrothermal system are unknown, as post-mineral volcanics conceal the system and discovery potential to the south.

The project is **permitted and drill-ready**. 43-101 report by **MDA** available.

Map of volcanic hosted/related Au/Ag deposits in Nevada



Google Earth View



Google Earth view south toward Mercury Mountain Project area.
Width of view is approximately 2.3 miles (3.7 km) in center of picture.

Quartz Mountain Project

Mid-Miocene hot springs system with Nevada “Rift” style geology.

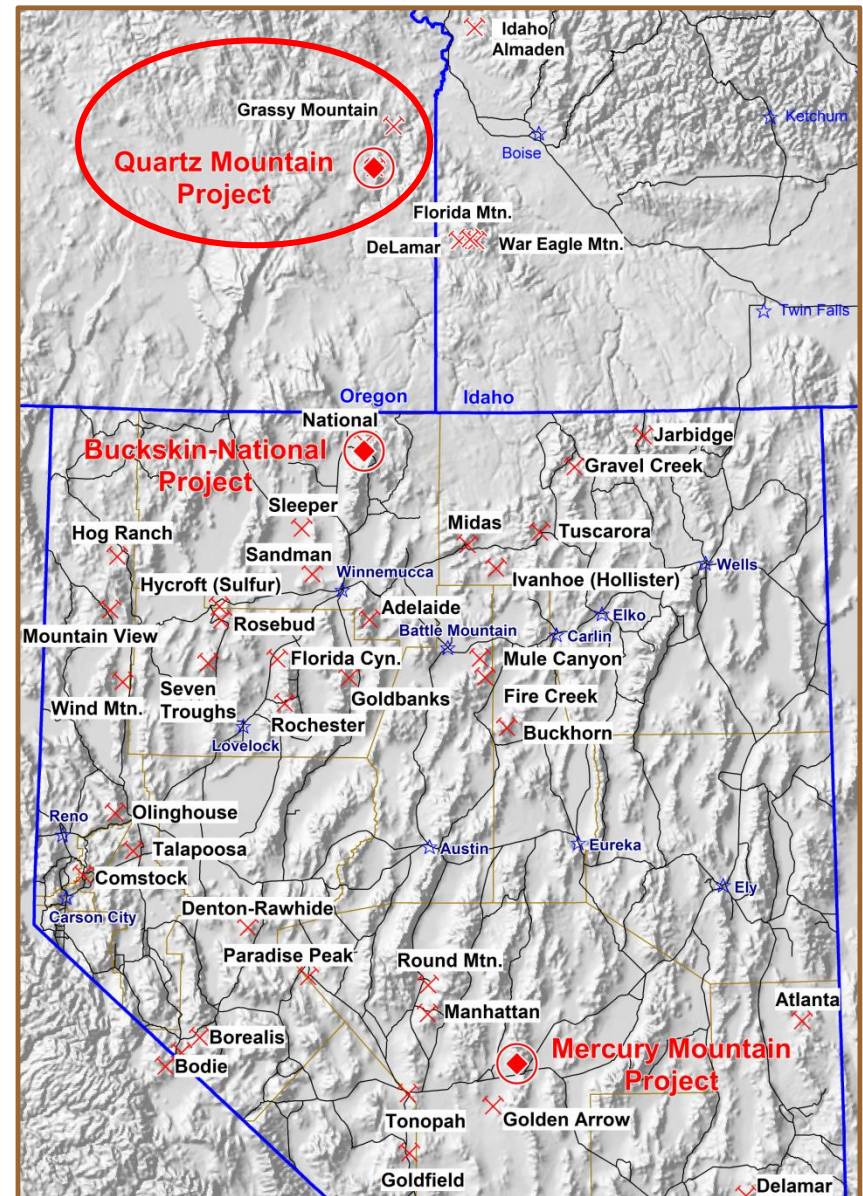
43-101 Indicated Resource calculated in 2006 is 352,700 total AuEq ounces (11 t) in near-surface deposits.

16.55 m tons (15.01 mt) @ 0.017 opt (0.58 g/t) Au and 0.213 opt (7.29 g/t) Ag above a 0.010 opt (0.34 g/t) Au cutoff.

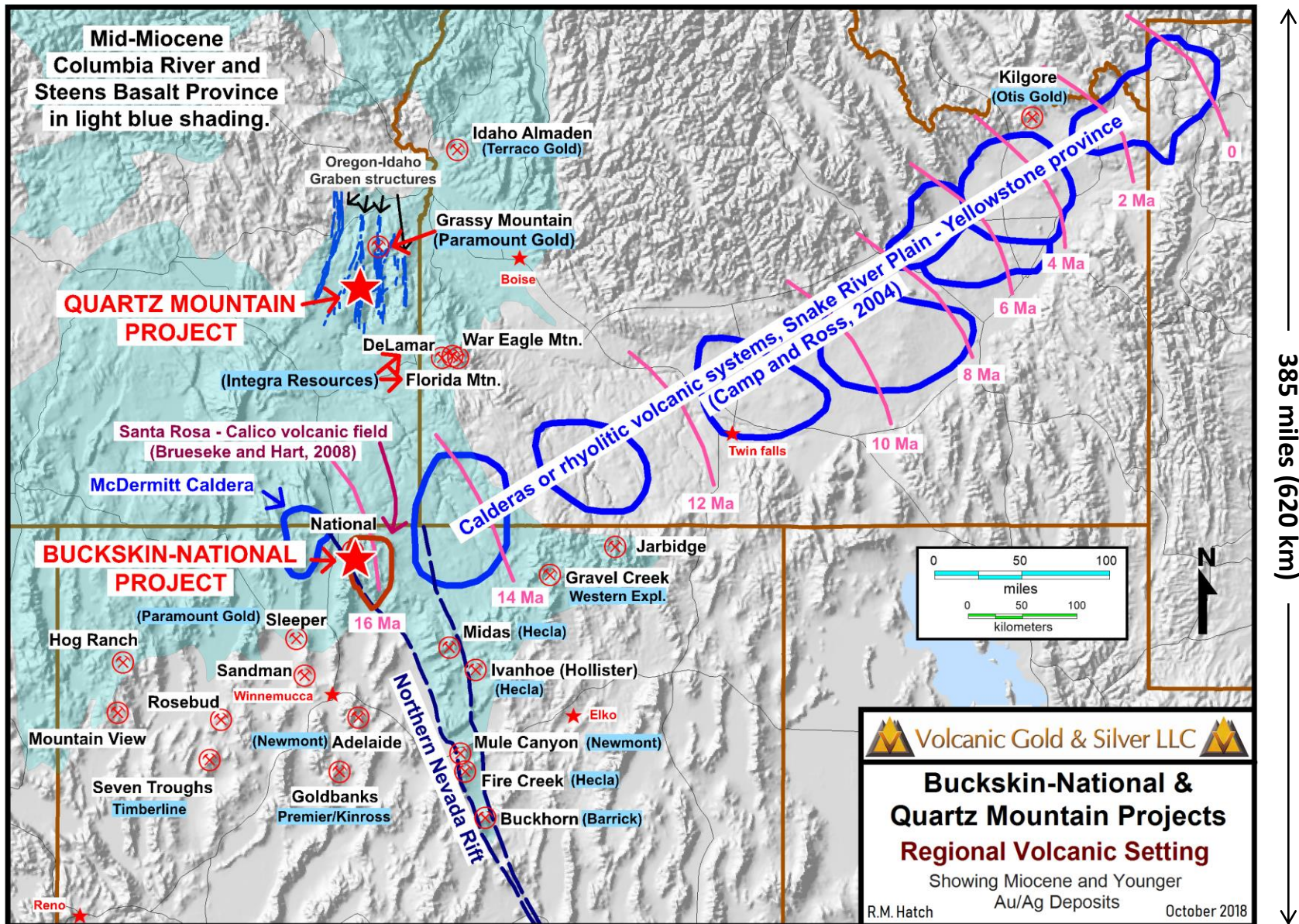
Located 18 miles (29 km) southwest of Paramount Gold’s Grassy Mtn. Project which is currently being permitted and advanced (PFS) for underground mine and mill, and 60 miles (97 km) NW of Integra Resources' DeLamar Project.

The most recent exploration was in 1990 (29 years ago!).

Deeper, high grade potential has never been explored for.



Regional Volcanic Setting



← 523 miles (842 km) →

↑ 385 miles (620 km) ↓

Google Earth View



**Google Earth view north toward Quartz Mountain Project area.
Width of view is approximately 2.7 miles (4.3 km) in center of picture.**

Volcanic Gold & Silver LLC

Founding owners of Volcanic Gold & Silver will have the advantage of an investment in a new gold and silver exploration company with:

- ✦ A clear focus;
- ✦ Exceptionally prospective projects that can quickly create substantial increases in value;
- ✦ An undiluted ownership structure;
- ✦ Skilled and experienced technical and management personnel.

Robert M. Hatch – Owner/Manager

775 771-9679 RMHatch@VolcanicAuAg.com