



meeting real-time dynamic needs of exploration development projects



Overview

“The EDM” is the Web-Based Exploration Data Management System.

- Multiuser web-based application designed to meet the real-time dynamic needs of exploration – development projects—significantly reducing data management costs and increasing data accuracy.
- Much more flexibility and utility than frontends to typical mine planning software packages.
- Being web-based allows management as well as technical employees immediate access to data utilizing SQL Server® based security model insuring data integrity and improving report turnaround time.
- No software installation required; just Internet Explorer® and an internet connection.
- Audit trails are maintained on all primary tables allowing change tracking when required.
- Microsoft SQL Server® database allows third-party software to connect remotely via ODBC.
- Generate canned as well as user customizable reports and export files.
- Customized export formats can be generated to client specifications minimizing reporting delays.

The home screen from our Training Site is shown below. The basic concept is to provide access to all information concerning a particular drill hole from one screen. Note there is a separate tab for surface or point samples as well.

EDM solutions EDMS Gold Project Training Site rehusar

Start Page | Logout
Geology Data Digger | Request a Feature
Sample Data Digger | DB Maintenance

Header | Assay | Geochem | Lithology | Alteration | Structure | Mineral | Survey | Formation | Geotech | Qa Qc | Surface Samples | Drill Management

Project: First One | Drillhole: REH003 | Enter Drillhole: | 20 Most Recent Drillholes: Select A Recent Drillhole

Drill Hole Header Reporter | Import Drillholes | Remove Drillholes | Edit Drillhole | New Hole

Drill Hole: REH003

Company: EDM Solutions | Hole Type: RC | Hole ID: REH003
Project: First One | Site: your site | Year: 2010
Area: North | Surveyed By: | Survey Date:

Drill Hole Comments: Test Drill Hole

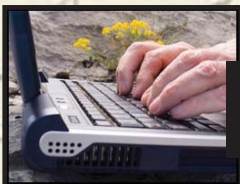
UTM E (m)	UTM N (m)	Elevation (m)	Length (m)	AZIMUTH	DIP
123600.000	3434700.000		121.9200	20.0000	-80.0000
Easting (ft.)	Northing (ft.)	Elevation (ft.)	Length (ft)	UTM Zone	Projection
			400.0000	11	NAD27

Start Date	End Date	Log Source	Location	Section
3/1/2010	3/10/2010			

Logged By Geologist	Last Table Updated	Update Time
	Header	11/7/2012 12:56:47 PM

Drill Hole Quality Metrics:

Location Quality	Lithology Quality	Assay Quality	Status	Have Survey	Method
Medium Map or digital	Medium graphic log	Low unknown source	Drilled	<input type="checkbox"/>	



Web-based Exploration Data Management System





meeting real-time dynamic needs of exploration development projects

Data Entry

Data can be entered directly on various web pages if internet access is available, or by importing user customizable Excel® spreadsheets. Assay and geochemical certificates received from labs are imported and stored in an isolated repository. Data from this repository are posted to the assay, geochem, and QaQc tables based on rule sets managed by client-designated user.

Surface samples or other point sample data can be entered directly or from Excel® spreadsheets. Assay lab files automatically post to the surface sample table following the rule sets mentioned above.

Geologic logs can be entered using basic import template or user-modified import templates. Management of different log versions, including relogs, is quick and easy.

Bulk Data Importing

Historic and other forms of bulk data can be imported from spreadsheets utilizing the geologic log import module.

Data Importing		
Category	XLS	Manual
Drill Hole Header/Collar	Yes	Yes
Dbsheet/Drill Samples	Yes	No
QaQc Samples	Yes	Yes
Assay Certificates	Yes	No
Drill Hole Surveys	Yes	Yes
Geology Drill Log	Yes	Yes
Surface or Point Samples	Yes	Yes
Geology Codes	No	Yes
Lab Methods	No	Yes
Standards	No	Yes
Projects	No	Yes
Areas	No	Yes
Geologist	No	Yes
Users/Permissions	No	Yes

Data Integrity

There are numerous data validation routines employed in the system. For example, when lab files are imported, lab methods and elements are checked against look up lists. Look up lists are also utilized for all geologic parameters. Each Project can have a unique set of look up lists. Referential integrity is enforced on Project, Holename and depth in primary tables.

Database Security

A security model is employed with SQL Server® to limit permissions based on assigned roles. For instance, all valid users are able to view most data but are not allowed to make changes. A user assigned to the Geology role can modify geologic records but cannot create assay records. The security model is managed from an administrative form by a client-designated user. Changes to data in the primary tables are audited in the background so there is a complete list of changes available indicating what, when and who made them.

Data Reporting

User customizable reporting is available along with various standard reports. Export files can be created to support virtually any third party application. Significant intercepts can be calculated and stored using a user configured color-coded interactive form.

Productivity Tools
Compositing (GxT calculator)
Significant Intercept Calculation
RC Sample Generator
Sample Data Digger
Standards Management
Geology Log Template Mapping
Lab Method Management
Request Submission
Remove Header Records
QaQc Reporting

Reporting-Exporting
Geodata Digger Report
Table Data Exporting
GeoData Exporting
Assays Complete
Recent Changes
Assay Report
Results By Method
Lab Method Management
Header Report
Automated Email Reports

